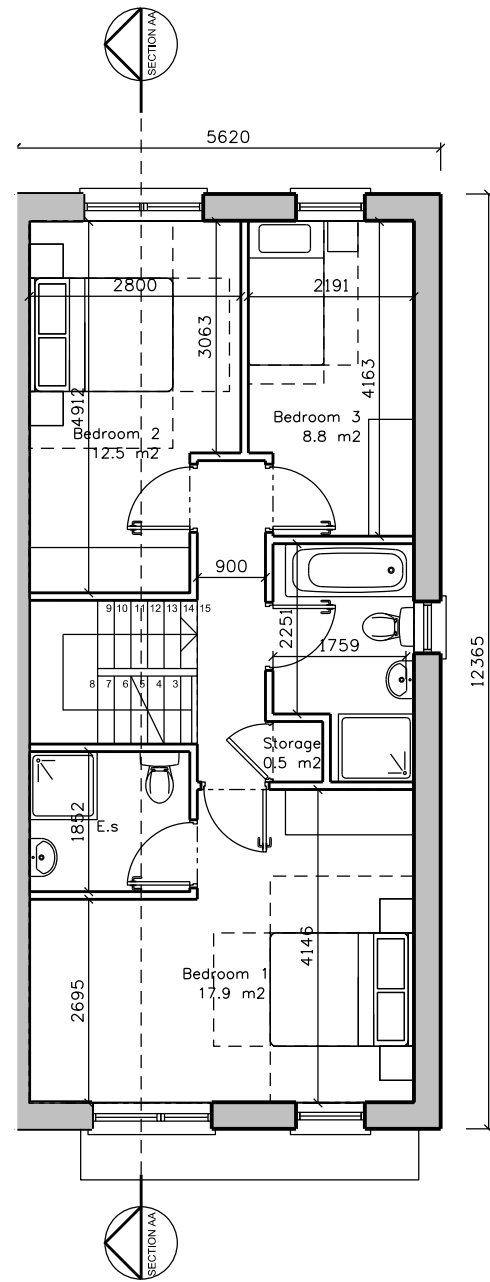
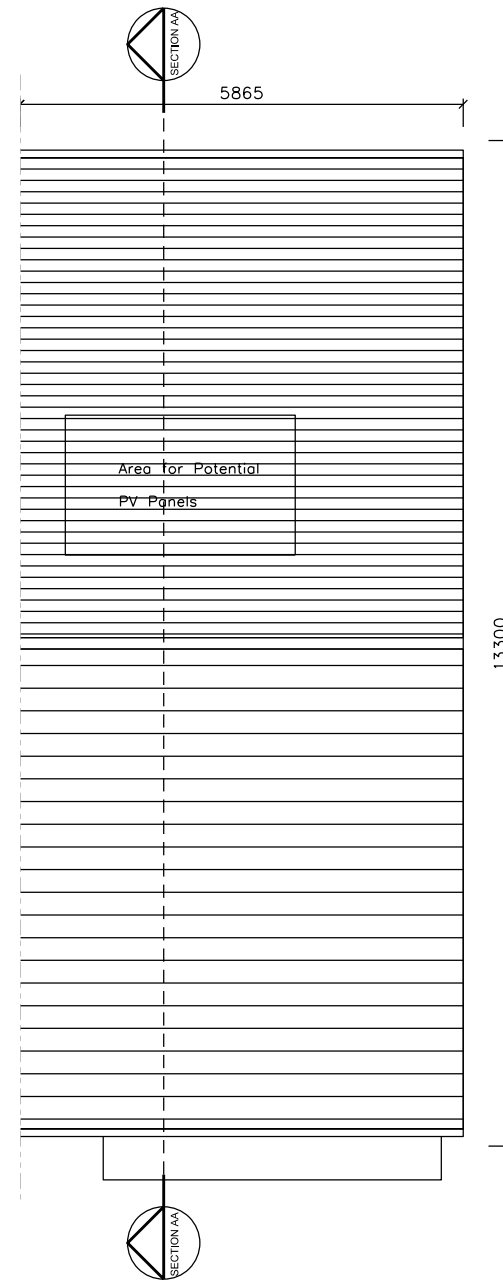


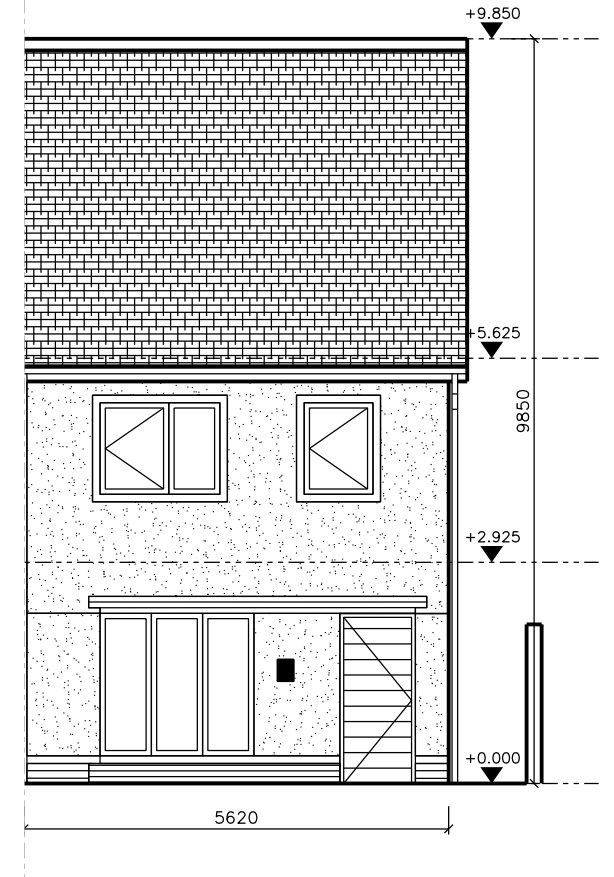
GROUND FLOOR PLAN



FIRST FLOOR PLAN



ROOF PLAN



FRONT ELEVATION

3B 5P SEMI	
- Ground	60.9 m2
- First	59.4 m2
- Total	120.3 m2
Cook/Dine	19.3 m2
Living	19.2 m2
Storage	5.3 m2
Agg Bed	39.2 m2
Agg Live	38.5 m2

Dwelling Type B



NOTE:
REFER TO PROPOSED SITE LAYOUT PLANS
FOR BUILDING LEVELS AND ORIENTATION

Revision	Date	Description	By	Check	Client logo
A	27.08.19	ABP Planning Application Issue	ML	BG	



Notes
Do not scale drawings. All dimensions should be checked on site. Errors to be reported to architect. To be read in conjunction with all relevant architects services and engineers drawings.
Contractors, sub-contractors and suppliers must verify any critical dimensions on site prior to fabrication of any building element. Any discrepancies are to be reported to the architect.
This drawing should be read in conjunction with all relevant specifications, engineers and specialists consultants information. Any discrepancies must be reported prior to installation.

Key
NOTES ON FINISHES:
ROOF: To be finished in clay or concrete roof tiles in selected colour or similar approved.
WALLS: Selected clay brickwork where indicated otherwise selected self coloured render.
Expressed surround to window openings and bands to be reconstituted stone or selected render.
JOINERY: All windows and doors, frame and leaves, to be aluminium powder coated to approved colour or uPVC.
RAINFALL GOODS: Gutters, downpipes, and fittings to be upvc or aluminium powder coated to selected colour.
CANOPIES: Metal clad canopy to selected colour.
SERVICE METERS: Location of meters shown is indicative.
SOLAR PANELS: Indicative position shown, final position will depend on house orientation

Metropolitan Workshop
14-16 Cowcross Street
London, EC1M 6DG
+44 (0) 20 7566 0450
www.metwork.co.uk

Project:	Farrankelly
Client:	Calm Homes Properties Ltd
Location:	Farrankelly, Greystones, Delgany, Co. Wicklow
Title:	Dwelling Type B - 3B Semi Detached - Sheet 1
Date:	27 August 2019
Scale:	1:100 @ A3

Drawing Number:	Job No.	Status	Package	Reference	Revision
1609	P		101	007	A